

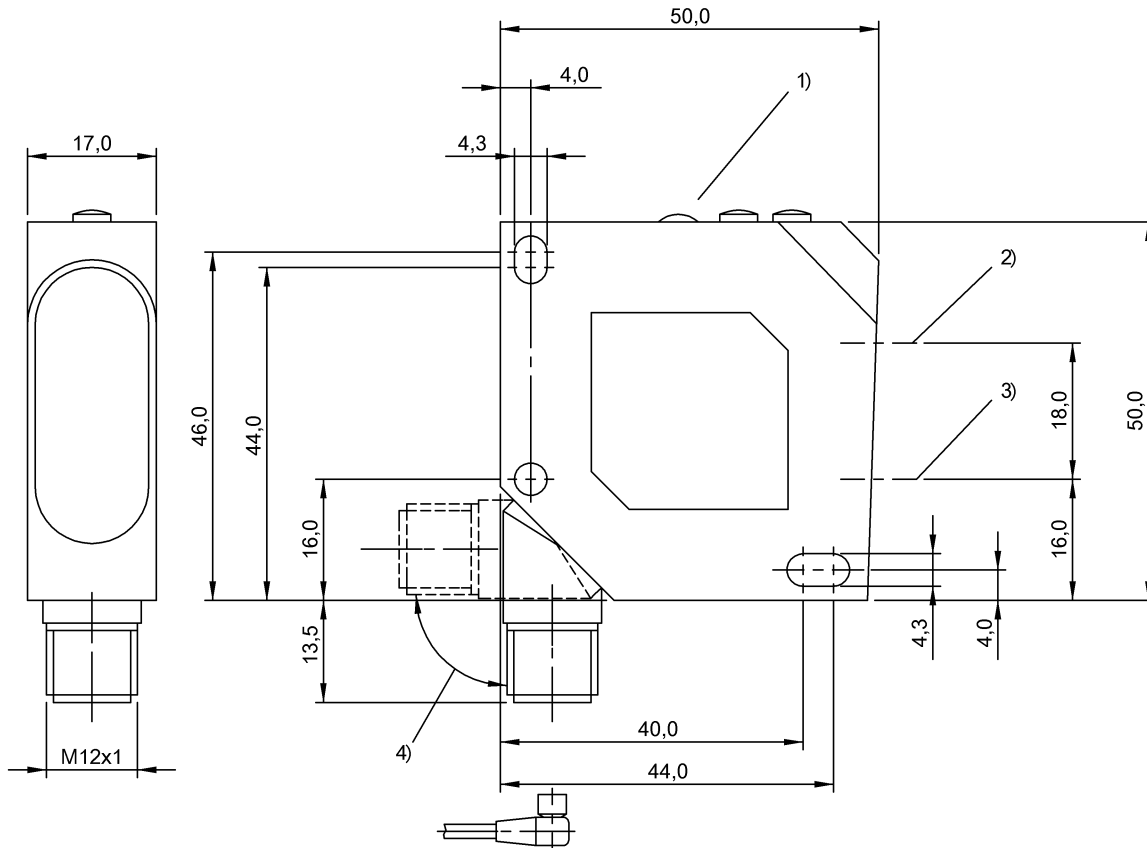
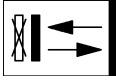
**BOS 26K-PA-1IE-S4-C**  
**Ordering code: BOS008A**

Diffuse sensor  
 Series 26K  
 Working Range: 150...600 mm

PNP (2x), NO-NC (pins 4-2)  
 Infrared  
 DC, direct current

**BALLUFF**

sensors worldwide



1) Display and control panel, 2) Optical axis receiver, 3) Optical axis emitter, 4) 270° rotatable

**Characteristic data**

Operating voltage	10...30 V DC
Connection	Connector, M12x1-S04
Switching freq. f max.	800 Hz
Indicator	Switching dist. - dig. disp.
Setting	Switching distance (Sn)
Adjuster	Potentiometer 2-turn (1x)
Short-circuit protected	yes
Protected against polarity reversal	yes
Enclosure Type per IEC 60529	IP67
Protection class	II

**Optical data**

Principle of optical operation	Light scanner, triangulation
Switching function, optical	NO light-on - NC dark-on
Light spot size, typical	20 mm x 20 mm at 400 mm
Light type	Infrared
Wavelength	880 nm
Ambient light max.	5,000 Lux
Optical special feature	Background suppression

**Electrical data**

Rated operating voltage Ue DC	24 V
-------------------------------	------

Effective operating current Ie	200 mA
Rated insulation voltage Ui	75 V DC
Load capacitance max. (at Ue)	1 µF
Ripple max. (% of Ue)	10
Switching output	PNP (2x)
Switching function	NO-NC (pins 4-2)
Turn-off delay toff max.	0,63 ms
Turn-on delay ton max.	0,63 ms
No-load current max. Io at Ue	70 mA
Voltage drop Ud max. (at Ie)	2,4 V

**Mechanical data**

Eff. switching distance Sr	600 mm
Capture range Sd	150...600 mm
Range Sn	Sn = 600 mm, adjustable
Minimum operating distance	150 mm
Dist. dev. 18% max. (% of Sr)	8 % with 90 % rem.
Connector type	M12x1-S04
Sensing surface material	PMMA
Housing material	ABS
Mounting type	Screw M4
Design	Block, rotatable connection
Ambient temperature	-20...60 °C

**BOS 26K-PA-1IE-S4-C**  
**Ordering code: BOS008A**

Diffuse sensor  
Series 26K  
Working Range: 150...600 mm

**BALLUFF**

sensors worldwide

PNP (2x), NO-NC (pins 4-2)  
Infrared  
DC, direct current

**Basic data**

Basic standard

IEC 60947-5-2

The sensor is functional again after the overload has been eliminated.

Reference object (target): Gray card, 200 x 200, 90 % remission, axial approach.

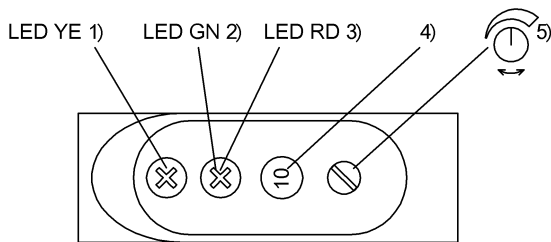
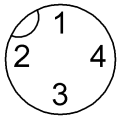
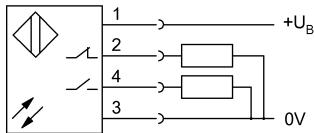
Only for NFPA 79 applications (machines with a supply voltage of maximum 600 volts). Device shall be connected only by using any R/C (CYJV2) cord, having suitable ratings.

For additional information, refer to user's guide.

Order accessories separately.



LISTED IND. CONT. EQ. 77HA  
for use in the secondary of  
a class 2 source of supply



- 1) Output function
- 2) Stability
- 3) Error
- 4) Switching dist. dig. displ.
- 5) Sensitivity